

Eolo | Olympia



FIRE System

Addressed digital panels
Certification EN 54
Management over TCP / IP



INDEX

| | | | |
|---|----|---|----|
| Addressed digital panels | 4 | Acoustic optical display units | 23 |
| Peripherals for addressed digital units | 7 | Reflective optical beam linear smoke detectors..... | 24 |
| Addressed detectors | 8 | Linear smoke detector barriers..... | 25 |
| Addressed modules..... | 10 | Anti flooding | 25 |
| Addressed call points and sounder | 11 | Gas detector | 26 |
| Conventional detectors modules | 12 | Flame detectors..... | 27 |
| Accessories for addressed detectors | 13 | Spark detector | 28 |
| Wireless fire detection modules..... | 15 | Sirens and bells..... | 28 |
| Integrated monitoring software..... | 20 | Electromagnetic block..... | 29 |
| Conventional Fire Alarms | 21 | Adaptors and power supply units..... | 30 |
| Radio module for conventional units | 21 | Open frame adaptors..... | 31 |
| Conventional detectors | 22 | Cables..... | 31 |
| Alarm call point | 22 | Batteries | 31 |



> **OLYMPIA** 4 loop addressed digital panel expandable up to 16 loops



HARDWARE Features

- 16 bit microprocessor analog unit
- 4 digital protocol addressed analog loops, expandable up to 16 using OLY4 expansion cards
- 240 detectors/modules per loop.
- 40x8 character LCD display with back-light function
- Touch keypad with 25 function keys
- Loop short circuit protection.
- 12 front panel LEDs and 32 front panel area status LEDs
- 1 supervised sounder output (24Vdc 1A)
- 1 supervised output to trigger the fire alarm signal devices or the activation of the the extinguisher devices
- 1 supervised output dedicated for fire alarm communication system
- 1 fault relay output with floating contacts -1A 30Vdc 120 Vac
- 1 excluded sensors/modules/areas relay output with floating contacts -1A 30Vdc 120 Vac
- 1 technological relay output with floating contacts -1A 30Vdc 120 Vac
- 1 alarm relay output with floating contract output
- 1 RS 485 serial line for connection to remote panels and printer
- 1 RS 232C serial line for centralization, remote management and remote programming with CEI 79/5, 79/6 protocol)
- Programming data stored on non volatile EEPROM memories
- 2 26aH capacity accumulators with temperature controlled battery charger
- Warning signals for:
 - 230 Vac power supply absence
 - battery absence
 - Low battery and exhausted
 - Faulty battery charger
- Auxiliary power output 24 Vdc 2.5 A monitored and protected against short circuits for external loads
- Management of additional conventional line via FDVMCZ100 module
- Power consumption when idle 600 mA at 12Vac
- Maximum absorption: 690 mA at 230 Vac
- Dimensions: 520x450x250 mm (AxLxP)
- Power supply: 230Vac/27Vdc 5.6A
- 1 supervised output to fire alarm system of communication

Functional characteristics

- Division in up to 96 detection areas
- 96 logic functions
- Historically archive of the last 1024 events
- Automatic loop devices discovery
- Management of various types of detectors and analog modules:
 - Optical,Thermal and mixed detectors
 - Input modules
 - Output modules
 - Addressed buttons
 - Addressed analog sounders
- Customised programming of phrases for each input
- 1 programming password
- 1 Maintenance password
- Technological functionality
- Local or remote programming using local Win SW via serial line or LAN/WAN network
- Management of gas detection
- MODBUS RTU protocol Whit MCGTW

Reference Standards:

Product certified to EN54-2 and EN54-4 standards
CE Marking (EMC low voltage directive)
Certified n. 1293-CPD-0198



> **TKE** Remote control panel for EOLO and OLYMPIA fire control panel



- 40x2 character LCD display with back-light function
- 17 status LEDs
- 19 function buttons: Silence, Reset, Silence/rearm sounder alarm, Status, Arrow Up, Down, Left and Right buttons, ENTER key, Numerical keys from 0 to 9
- For remote management (max 4 keyboards) for Eolo and Olympia units
- Can be connected to all addressable analog units
- Mechanical key for use on the keyboard
- Metal case
- Wall or desk version available
- Dimensions: 230x120x45
- Power supply: 24Vdc
- Current absorption: 50mA max

> **OLY 4 4** addressed analog loop expansion card for Olympia unit



- Fitted inside the control panel.
- 1 generic relay alarm output 1A 30Vdc 120 Vac
- 1 fault relay output 1A 30Vdc 120 Vac
- Configuration of 4 loops Closed or Open
- The maximum capacity for each loop is 240 detectors/modules, for a total of 3,840 devices for a 16 loop configuration. These applications are to be assembled to EN-54 Standards, however it is necessary to keep in mind the mandatory limit of 512 devices per OLY4 (4 loop) card, for a total of 2,084 devices.

> **OLYNET** Network card for Olympia control panel



- CAN BUS connection
- Up to 32 Control panels
- Up to 50 Kbps data transmission.
- Fault tolerant connection, in case of fault it assures the necessary communication using a ring connection
- Compatible with Olympia fire panel
- Internal mounting in Olympia fire panel
- Up to 1,2Km cable length
- Consumption: 250mA max
- Power supply: 12Vdc from Olympia fire panel

> **FDCANMONO** Mono mode optical fibre converter with ST connector for Olynet card **on request*

- Power supply: 12Vcc

> **FDCANMULTI** Multi mode optical fibre converter with ST connector for Olynet card **on request*

- Power supply: 12Vcc



> **EOLO 2** loop addressed digital panel



HARDWARE Features

- 16 bit microprocessor analog unit
- 2 digital protocol addressed analog loops with open or closed configuration
- 240 detectors/modules per loop.
- 40x2 character LCD display with back-light function
- Touch keypad with 25 function keys
- Loop short circuit protection.
- 17 frontpanel LEDS
- 1 supervised sounder output (24Vdc 1A)
- 1 supervised output to trigger the fire alarm signal devices or the activation of the extinguisher devices
- 1 fault relay output with floating contacts -1A 30Vdc 120 Vac
- 1 excluded sensors/modules/areas relay output with floating contacts -1A 30Vdc 120 Vac
- 1 technological relay output with floating contacts -1A 30Vdc 120 Vac
- 1 RS 485 serial line for connection to remote panels and printer
- 1 RS 232C serial line for centralization, remote management and remote programming with CEI 79/5, 79/6 protocol)
- 1 alarm relay output with floating contract output
- Programming data stored on non volatile EEPROM memories n. 2 17aH capacity accumulators with temperature controlled battery charger
- Warning signals for:
 - 230 Vac power supply absence
 - Battery absence and battery fault
 - Low battery
 - Faulty battery charger
- Auxiliary power output 24 Vdc 2.5 monitored and protected against short circuits for external loads
- Management of additional conventional line via FDVMCZ100 module
- Power consumption when idle 300 mA at 12Vdc
- Maximum absorption: 690 mA at 230 Vac
- Dimensions: 450x410x130 mm
- Power supply: 230Vac/27Vdc 5.6A

Functional characteristics

- Division in up to 32 detection areas
- 32 logic functions
- Historically archive of the last 385 events
- Automatic loop devices discovery
- Management of various types of detectors and analog modules:
 - Optical,Thermal and mixed detectors
 - Input modules
 - Output modules
 - Addressed buttons
 - Addressed analog sounders
- Customised programming of phrases for each input
- 1 programming password
- 1 Maintenance password
- Technological functionality
- Local or remote programming using local Win SW via serial line or LAN/WAN network
- Management of gas detection
- MODBUS RTU protocol whit MCGTW

Reference Standards

Product certified to EN54-2 and EN54-4
 Certified n. 1293-CPD-0154
 standards CE Marking (EMC low voltage directive)



> **TKE** Remote control panel for EOLO and OLYMPIA fire control panel



- 40x2 character LCD display with back-light function
- 17 status LEDs
- 19 function buttons: Silence, Reset, Silence/rearm sounder alarm, Status, Arrow Up, Down, Left and Right buttons, ENTER key, Numerical keys from 0 to 9
- For remote management (max 4 keyboards) for Eolo and Olympia units
- Can be connected to all addressable analog units
- Mechanical key for use on the keyboard
- Metal case
- Wall or desk version available
- Dimensions: 230x120x45
- Power supply: 24Vdc

> **PR40** 40 column thermal printer for fire detection units



- Connection on RS 485 serial line
- Out-of-paper monitoring
- Metal case for wall-mounting
- Power supply 12Vdc
- Current absorption: 200mA (1500mA peak)

> **PTLAN** Ethernet interface for analog fire detection unit



- TTL serial interface powered by the panel and housed internally
- From 300 to 230 kbps
- Control signals: RTS, CTS, DTR, DCD
- Ethernet interface 10 Base T
- RJ45 Connector
- Operating temperature: -10C° + 50C°
- Dimensions: 45x90x28 m

> **WIN LOCAL** Programming sw for EOLO and OLYMPIA fire detection panels

Windows environment SW to program the Fire Detection panels and all other TELEDATA devices on RS232 serial lines or LAN and WAN geographical networks



> **SF1000** Optical smoke detector addressed with digital communication protocol



- Low profile optical smoke detector to be fitted on the BS100 base
- It is made from multi-coloured plastic material and has a modern design.
- Fitted with integrated insulation circuit.
- Automatic self-adaptation to the variations in environmental conditions
- 3 color LED
- Power supply 10-40V
- Average power consumption 90 µA
- Maximum power consumption of remote LED 6mA
- Operating temperature - 30C° to + 70C°
- Max humidity 95% with no condensation
- Height: 54mm
- Diameter: 110mm
- Weight with the base: 130g

> **SF1000 E** Optical smoke detector addressed with digital communication protocol

Same features of SF1000 but without isolator on board and with a single color red LED

> **SF2000** Optical + Thermal Rate of Rise detector addressed with digital communication protocol

- Combined optical smoke + rate of rise detector at 58°C
- It is made from multi-coloured plastic material and has a modern design.
- Fitted with integrated insulation circuit
- Automatic self-adaptation to the variations in environmental conditions
- 3 color LED
- Power 10-40V
- Average power consumption 90 µA
- Maximum power consumption of remote LED 6mA
- Operating temperature: - 30C° to + 70C°
- Max humidity: 95% with no condensation
- Height: 54mm
- Diameter: 110mm
- Weight with the base: 130g

> **SF2000 E** Optical + Thermal Rate of Rise detector addressed with digital communication protocol

Same features of SF2000 but without isolator on board and with a single color red LED

> **SF3500** Programmable Thermal fixed and Rate of Rise detector addressed with digital communication protocol

- It operates in thermal fixed mode with a temperature threshold of 78°C
- It is made from multi-coloured plastic material and has a modern design.
- Fitted with integrated insulation circuit
- 3 color LED
- Programmable operatig temperature 58°C or 78°C
- Power: 10-40V
- Average power: consumption 90 µA
- Maximum power: consumption of remote LED 6mA
- Operating temperature: - 30C° to + 70C°
- Max humidity: 95% with no condensation
- Height: 54mm
- Diameter: 110mm
- Weight with the base: 130g

> **SF3500 E** Programmable Thermal fixed and Rate of Rise detector addressed with digital communication protocol

Same features of SF3500 but without isolator on board and with a single color red LED



> **BS100 Standard base**



- It is made from plastic material and has a modern design.
- Fitted with resistor for FD 104 unit
- Version with relay base onboard BSE 100 R model also available
- Diameter: 110 mm
- Height: 42 mm
- Weight (without) the base: 99.4 g
- Operating temperature: - 10 ÷ + 60°C
- Relative operating humidity 10÷ 93% non condensing
- Local warning indicator (stand by and alarm) - Red LED
- ABS + PC (UL94-V0) plastic materials

> **FDLVM100 Insulator module**



Isolator module for use in conjunction with devices without a isolated sections, each 31 points

- Maximum number of Vega Lite devices that can be “cut off” by the isolator module: 31 units
- Loop's voltage range: from 15 V to 40 V
- Standby current consumption: 90 µA at 24 V
- Operating temperature range: from -30 °C to + 70 °C
- Humidity from: 5 % to 85 %
- Dimensions 75 x 52 x 28 mm
- Weight 40 grams
- Applicable wire gauge range from 0.5 mm2 to 2.5 mm2

> **SF XXX0 COLOR XX Detectors customized with different colours** **on request*



Coloured smoke detectors are also available customized to client specifications. These solutions are specifically designed for installation projects where the final overall look is very important

MARBLE



CARRARA 11



BLACK 15

WOOD



CILIEGIO 23

METAL



ORO 31



ALLUMINIO 32



Addressed mini modules interfaceable with unit loop devices

- > **FDVMI100** Input mini module
- > **FDVMC120** Output mini module
- > **FDVMC100** Monitored output mini module
- > **FDVMM120** Input and output mini module
- > **FDVMM100** Monitored input and output mini module

- Power 10-40V
- Average power consumption 120 µA
- Power consumption of LED 6mA (24V - line)
- Fitted with integrated insulation circuit
- Relay output 30Vdc 2A
- Operating temperature - 30°C to 70°C
- Max humidity 95% with no condensation
- Dimensions 75x55x30mm
- Weight: 200g

Addressed wall modules interfaceable with unit loop devices

- > **FDVMIC100** Monitored input and output module

- Power 10-40V
- Average power consumption 120 µA
- Power consumption of LED 6mA (24V - line)
- Fitted with integrated insulation circuit
- Relay output 30Vdc 2A
- Operating temperature: - 30°C to 70°C
- Max humidity: 95% with no condensation
- Dimensions: 87x87x23 mm
- Weight: 200g



- > **FDVMIC404** 4 input 4 output module

Same features of FDVMIC100 but with dimensions 130x130x35

- > **FDVMIC422** 4 input 2 output 2 monitored output module **on request*

Same features of FDVMIC100 but with dimensions 130x130x35

- > **FDVMIC602** 6 input 2 output module

Same features of FDVMIC100 but with dimensions 210x170x65mm

Addressed DIN rail mount modules interfaceable with unit loop devices



- > **FDVMDI100** Input mini module **on request*
- > **FDVMDC100** Monitored output mini module **on request*
- > **FDVMDC120** Output mini module **on request*
- > **FDVMDIC100** Monitored input and output mini module **on request*
- > **FDVMDIC120** Input and output mini module **on request*

- Power: 10-40V
- Average power consumption 120 µA
- Power consumption of LEDs 6mA (24V - line)
- Fitted with integrated insulation circuit
- Relay output: 30Vdc 2A
- Operating temperature: - 30°C to 70°C
- Max humidity: 95% with no condensation
- Dimensions: 79x90,5x25mm



> **FDVCP100** Addressable resettable manual call point

- Red coloured ABS
- Fitted with integrated insulation circuit
- Accessories for flash-mounting fixture
- Power: 10-40V
- Average power consumption 70 µA
- Power consumption of LED 6mA (24V - line)
- Operating temperature: - 20C° + 65C°
- Max humidity: 95% with no condensation
- Dimensions: 87x87x23 mm



> **FDVCP67** Addressable resettable IP67 manual call point

- Low Consumption
- Short circuit isolator integrated
- Addressable
- Power supply: from 15 to 40 Vdc
- Current consumption: 6mA With blink led
- Operating temperature: -20/+705C°
- Protection rating: IP 67
- Dimensions: 119x128x62 mm
- Available in red, blue, green, yellow and white colours



> **FDS100** Addressable sounder

- 3 tone
- Red plastic casing
- Fitted with integrated insulation circuit
- Power: 15-30V
- Average power consumption 70 µA
- Power consumption of enabled siren 5mA (24V - line)
- Siren output 100dB
- Activation time on startup 2 sec
- Protection rating IP 42
- Operating temperature: - 25°C to 70°C
- Max humidity: 95% with no condensation
- Dimensions: 105x105x90 mm
- Weight: 200g



> **FDS100LMPG** Addressable sounder and flash indicator

- 3 tone
- Red plastic casing
- Fitted with integrated insulation circuit
- Power 15-30V
- Average power consumption 70 µA
- Power consumption of enabled siren 9mA (24V - line)
- Siren output 100dB
- Flashing indicator brightness level 2cd
- Activation time on startup 2 sec
- Protection rating IP 21
- Operating temperature -10C°+55°C
- Max humidity 95% with no condensation
- Dimensions: 105x105x90 mm
- Weight: 200g



> **FDLBE100** Addressable led beacon

- Low Consumption
- Short circuit isolator integrated
- Addressable
- Extreme long service life
- Power supply: from 15 to 40Vdc
- Current consumption: 3mA
- Operating temperature: -10/+55C°
- Protection rating IP 21
- Dimensions: diam. 93 x h. 53 mm
- Weigth 110g



> **FDVWLS100** Addressable waterproof sounder



This acoustic output device is activated by a specific command sent from the analogue control panel. It provides a 3 tone set: the installer can set one of it. Sounder volume can be set on the device.

- Power supply: 19-30 VDC
- Standby current consumption: 70 μ A
- Alarm current consumption: 5 - 7 mA (at 24 V)
- Sound output volume selectable: 80-100 dB(A)
- Operating temperature range: -10 °C / +55 °C
- Humidity: 5 - 85% (no condensation)
- IP rating: IP 66

> **FDVWLS100-AV** Addressable waterproof sounder and flash indicator



This audiovisual output device is activated by a specific command sent from the analogue control panel. It provides a 5 tone set: the installer can set one of it. Sounder volume can be set on the device.

- Power supply: 19-30 VDC
- Standby current consumption: 70 μ A
- Alarm current consumption: 8 - 10 mA (at 24 V)
- Sound output volume (selectable): 89-90 dB(A) or 99-100 dB(A)
- Beacon flash rate: 1 Hz
- Beacon flash light intensity: > 1 Cd
- Operating temperature range: -10 °C / +55 °C
- Humidity: 5 - 85% RH (no condensation)
- IP rating: IP 66

> **FDVFI100** Addressable remote led for the ceiling or under floor



- Loop voltage range: 18 - 40 Vdc
- Average standby current consumption: 50 QA at 24 Vdc
- Activated lamp current absorption: 5.4 mA at 24 Vdc
- Loop cable's wire gauge range: 0.5 - 2.5 mm²
- Operating temperature range: -30 - +70 °C
- Maximum tolerated humidity: 85% RH
- Protection rating: IP 42

> **FDVMC Z100** Addressed modules for conventional detectors



- Fitted with integrated insulation circuit
- Absorption: 500 QA in Stand-By mode
- Power supply: 14-40V
- Average power consumption: 120 QA
- Operating temperature: -30°C+70°C
- Minimum voltage = 18V

**on request*



> **FDB100** Universal sounder for optical smoke detector

- Addressed analogue detector sounder to be assembled on the detector
- Triggered when the detector alarm repeater LED comes on
- Acoustic pressure at 1 meter 94 dBA
- Consumption at 24Vdc 11mA
- Protection rating IP42
- 4 different tones
- Operating temperature - 20C° + 70C°
- Weight: 121g



> **FDVBS100/32** 32 tone siren for fire detectors

- Voltage range: 15- 40 V
- Max current: 9.5 mA
- Max volume : 94 dBA
- 32 tone range: da 440 Hz a 2900 Hz
- Temp. range: -20 C° - 70C°
- Humidity range: da 5 a 95 % RH



> **FDVBLS100/32** 32 tone siren addressed for fire detectors

- It occupies a different address independently programmable
- Voltage range: 15- 40 V Typ 24 V
- Stand by current: 70 uA
- Max volume: 94 dBA
- 32 tone range: da 440 Hz a 2900 Hz
- Type of tone: programmable
- Temp range: -30 C° - 70C°
- Humidity range: da 5 a 95 % RH
- IP rating: 21C



> **FDVBS100-AV/32** 32 tone siren with flashing light for fire detectors

- Voltage range: 15- 40 V
- Max current: 12 mA
- Max volume : 94 dBA
- 32 tone range: da 440 Hz a 2900 Hz
- Flash rate: 1Hz
- Temp. range: -20 C° - 70C°
- Humidity range: da 5 a 95 % RH



> FDVPU1000 Programming unit



This product permits to set and read various parameters stored in the devices of the analogue-intelligent. The user can interact with the programming unit by using its in-built keypad and display; through this interface the user navigates through a menu-based set of options and commands, permitting him to program certain parameters on the devices or to read data from them.

The programming unit can be used, for example, to:

- read and set an analogue address on a device,
- read analog level and dirty level
- activate or deactivate input or output channels on a multi-module device,
- determine the firmware version of a device.

- Power supply battery: 6LR61 type, 9 V
- Operating temperature range: from -30°C to +70°C
- Maximum tolerated relative humidity: 95% RH (no condensation)
- Weight: 200 grams

> FDVLD100 Line driver



The Line Driver is a device which interfaces a personal computer to a fire loop which is composed of a wired system of analogue addressable fire security devices.

- Be used to test the loop devices installed
- External power supply range: 20 to 40 Vdc
- Loop power supply range: 18 to 38 VDC
- Suggested external power supply range: 24 to 29 VDC
- Suggested loop power supply range: 22 to 27 VDC
- Maximum supplied current by Line Driver to the loop: 500 mA
- Maximum supplied current by Line Driver to the loop (in limited current supply condition): 50 mA
- Connection type with the personal computer: RS232 or through USB <- RS232 adapter
- Operating temperature range: -30 °C / +70 °C (no condensation)
- Maximum tolerated humidity: 95% RH (no condensation)
- Recommended external power supply characteristics: 24 VDC - 1 A
- Minimum loop voltage to guarantee LED operation on most devices: 18 VDC
- Dimensions: 135 x 125 x 55 mm
- Weight: 370 g

> BOX500 Box for detectors for installation in shafts

- Adaptor for installation outside air shafts
- Detector alarm LED visible through the transparent surface
- Dimensions: 220x165x100 mm



> BOX1000 Professional smoke detector housing for duct installation

- Adaptor for duct installation
- Filter for dusty environment
- Suitable for conventional or Intelligent fire system
- Suitable with BOXTB06 (pipe 60 cm) and BOXBRK (mounting bracket for insulated or circular ducts)

> **FDW2W** Wireless receiver and protocol converter Teledata



- Wireless module and detector received for a maximum of 32 elements
- Powered by the panel loop, and able to address the different elements individually
- Bi-directional wireless communication with devices
- Up to 600 square mt coverage area
- Can be programmed to query the devices from every 12 sec to every 2 min.
- PC programmable device
- Supplied with dual battery with low battery indicator
- Wireless radiofrequency 868 -870 MHz
- Radiated Power from 0,01 to 7 mW
- Modulation type: FM
- Wireless query interval from 12 sec to 12 min.
- Number of channels:7
- Operating temperature: - 10C° + 55C°
- Power supply by loop



> **FDWE100** Wireless expander module

- Up to 32 devices can be used with each expander
- Communication range in open space 600m
- Communication range with FDW2W translator: 1000 m
- Operating frequency: 868-870 Mhz
- The expander can be programmed through a PC.
- Operating frequency channel: 7
- Modulation type: FSK
- High noise immunity
- Power supply: 24Vdc
- consumption: 25mA
- Operating temperature: -30/+55C°



> **SWF1000** Optical smoke detector with wireless communication protocol
 > **SWF2000** Optical + thermal detector with wireless communication protocol
 > **SWF3500** Thermal sensor with wireless communication protocol

- Bi-directional communication protocol
- Supplied with dual battery with low battery indicator
- Primary battery: CR123A
- Secondary battery: CR2032A
- It is made from multi-coloured plastic material and has a modern design.
- Automatic self-adaptation to the variations in environmental conditions
- Tamper protection
- Compliant to EN 54-5 EN 54-7 EN 54-25 Standards



> **FDWVMI100** Input mini module with wireless communication protocol

> **FDWVMI120** Form C output mini module with wireless communication protocol



- Fitted with 2 two-colour LEDs
- Supplied with dual battery with low battery indicator
- Primary battery: CR123A
- Secondary battery: CR2032A
- Relay output: 30Vdc 2A
- Tamper protection
- Operating temperature: -30C°+70°C
- Max humidity: 95% with no condensation
- Weight: 200g

> **FDWMCB100** Wireless battery powered relay output module



- Dotato di doppia batteria con segnalazione di riserva di alimentazione in funzione
- Main battery type: CR123A
- Secondary battery type : CR123A
- Main battery lifespan: 5 Years
- Secondary battery lifespan: 2 Years
- Operating frequency: 868-870Mhz
- Operating frequency channel: 7
- Modulation type: FSK
- High noise Immunity
- 1 relay output: 30Vdc, 2A, 60 W
- 12/24v output's max current supply: 40 mA/20mA

> **FDWCP100** Fire alarm call point with wireless communication protocol



- Alarm call point made from red coloured ABS
- Supplied with dual battery with low battery indicator
- Primary battery: CR123A
- Secondary battery: CR2032A
- Tamper protection
- Operating temperature: - 20C° + 65C°
- Dimensions: 87x87x23 mm

> **FDSGLSP100** Electronic sounder with radio communication protocol



- 3 tone sounder in red plastic casing
- Supplied with dual battery with low battery indicator
- Primary battery: CR123A
- Secondary battery: CR2032A
- Fitted with integrated insulation circuit
- Siren output 100dB
- Activation time on startup 2 sec
- Protection rating IP 42
- Operating temperature: - 25°C to 70°C
- Max humidity: 95% with no condensation
- Dimensions: 105x105x90 mm
- Weight: 200g



> **FDSGRS100** Wireless wall sounder



- The wireless wall sounder is an acoustic output device which is activated by a specific command sent from the control panel.
- Operating frequency: 868.15 MHz - 869.85 MHz
- Communication range with the translator or the expander: 200 mt in open space
- Radiated power: 5 dBm (3 mW) Typical
- Modulation type: FSK
- Operating frequency channels: 7
- Primary battery: Type CR123A (3 V & 1.2 Ah) 5 years typical
- Secondary battery : Type CR123A (3 V & 1.2 Ah) 2 months typical
- Operating temperature range: From -10°C to +55°C
- Max tolerated humidity: 95% RH No condensing
- Ingress protection rating: IP 21C
- Sound output volume (adjustable): 80 dB(A) - 100 dB(A)

> **FDSGRS100-AV** Audiovisual siren with flashing wall radio



- The audiovisual wireless wall sounder is an output device that combines together acoustic and visual signaling features performed in case of fire or emergency situations.
- Operating frequency: 868.15 MHz - 869.85 MHz
- Communication range with the translator or the expander: 200 mt in open space
- Radiated power: 5 dBm (3 mW) Typical
- Modulation type: FSK
- Operating frequency channels: 7
- Primary battery: Type CR123A (3 V & 1.2 Ah) 5 years typical
- Secondary battery: Type CR123A (3 V & 1.2 Ah) 2 months typical
- Operating temperature range: From -10°C to +55°C
- Max tolerated humidity: 95% RH No condensing
- Ingress protection rating: IP 21C
- Sound output volume (adjustable): 80 dB(A) - 100 dB(A)
- Beacon flash rate: 1Hz
- Beacon flash intensity: > 1 Cd

> **FDSGWRS100** Wireless waterproof wall sounder



- The wireless waterproof wall sounder is an acoustic output device which is activated by a specific command sent from the control panel.

Same specifications of FDSGRS100 but with:

- Ingress protection rating: IP 66

> **FDSGBE100** Wireless strobe beacon



- The wireless strobe beacon is an output device which, activated by the control panel, switches on in the event of alarm or emergency conditions.
- Operating frequency range: 868.15 MHz - 869.85 MHz
- Max radiated power: 5 dBm (3 mW)
- Radio signal's modulation type: FSK
- Operating frequency channels: 7
- Communication range with a wire to wireless translator or an expander: 200 m (in open space)
- Light output intensity range (user selectable): 0.5 / 1 Cd
- Flash rate range (user selectable): 0.5 / 1 Hz
- Min alarm current consumption range at 24 V(0.5 Cd and 1 Hz beacon's selected settings):3 mA
- Max alarm current consumption range at 24 V(1 Cd and 0.5 Hz beacon's selected settings):6 mA
- Main battery type: CR123A (3 V & 1.2 Ah) lifespan 5 years
- Secondary battery type: CR123A (3 V & 1.2 Ah) lifespan 2 months
- Operating temperature: -10 °C - +55 °C
- Tolerated humidity range: 5% - 95% RH (no condensing)
- Dimensions: 93 mm x 53 mm
- Weight (without batteries): 110 g
- IP rating:21C



> **FDSGFI100** Remote radio indicator



- Remote radio indicator that must be used with sensor in the ceiling or under floor.
- Operating frequency range: 868.15 MHz - 869.85 MHz
- Max radiated power: 5 dBm (3 mW)
- Radio signal's modulation type: FSK
- Operating frequency channels: 7
- Communication range with the translator or the expander: 200 m (in open space)
- Main battery type: CR123A (3 V & 1.2 Ah)
- Secondary battery type: CR123A (3 V & 1.2 Ah)
- Main battery lifespan: 5 years
- Secondary battery lifespan: 2 months
- Operating temperature: from 0 to +55 °C
- Max tolerated humidity (no condensing): 95% RH
- Dimensions : 87 mm x 87 mm x 68 mm
- Weight (without batteries): 180 g

> **FDSGRBS100** Base sounder radio



- The wireless sounder base is a device that activates its output when ordered so by the control panel in the event of fire alarms. Wireless sounder base is designed to act as a supporting mean for the - installation of wireless detectors.
- Operating frequency range: 868 MHz
- Radiated power: 5 dBm (3 mW)
- Usable operating frequency channels: 7
- Radio signal's modulation type: FSK
- Communication range with wire to wireless device or wireless expander device: 200 m in open space
- Main battery type: CR123A (3 V & 1.2 Ah)
- Secondary battery type: CR123A (3 V & 1.2 Ah)
- Main battery lifespan: 5 years
- Secondary battery lifespan: 2 months
- Operating temperature range: from -10 °C to +55 °C
- Maximum tolerated humidity - with no condensing: 95 % RH
- Maximum volume range at 1m -selectable: from 89 dBA to 91 dBA
- Device output tone's frequency range: 440 Hz to 2900 Hz
- Ingress protection rating: IP 21C
- Device's dimensions: 120 mm x 52 mm
- Device's weight: 150 g

> **FDSGRBS100-AV** Base sounder beacon radio



- The wireless audiovisual sounder base is a device that activates its output when ordered so by the control panel in the event of fire alarms. Wireless sounder base is designed to act as a supporting mean for the installation of wireless detectors.
- Operating frequency range: 868.15 MHz - 869.85 MHz
- Radiated power: 5 dBm (3 mW)
- Usable operating frequency channels: 7
- Radio signal's modulation type: FSK
- Communication range with wire to wireless device or wireless expander device: 200 m in open space
- Main battery type: CR123A (3 V & 1.2 Ah)
- Secondary battery type: CR123A (3 V & 1.2 Ah)
- Main battery lifespan: 5 years
- Secondary battery lifespan: 2 months
- Operating temperature range: from -10 °C to +55 °C
- Maximum tolerated humidity - with no condensing: 95 % RH
- Maximum volume range at 1m: selectable from 90.1 dBA to 92.4 dBA
- Device output tone's frequency range: 440 Hz to 2900 Hz
- Device's dimensions: 145 mm x x 66 mm
- Device's weight: 260 g

> **FDSGBD100** Beam detector radio **on request*



- This detector works on the principle of attenuation of the reflected IR signal.
- High noise immunity
- Programmable threshold and mode of operation;
- Visual function control by a bi-color LED;
- Coaxial laser module to the IR beam to facilitate alignment with the reflector
- The detector is equipped with an external antenna port for operation in conditions of degraded transmission of radio signals.
- Detection range: from 10m to 100m
- Adjustment range vertical: +6 deg
- Adjustment range horizontal: +10 deg
- Primary battery type: CR 123A – 1 pcs
- Secondary battery type: CR 123A – 3 pcs
- Current consumption in standby: < 100 uA
- Modulation type: FSK
- Operating temperature: -30 + 50 °C
- Operating frequency (standard): 868 MHz
- Operating frequency (optional): 434 MHz
- External power supply (optional): 9 - 27 Vdc
- Operating frequency channels: 7
- Radiated power: 5dBm (3mW) typical
- Communication range: 200m in open space
- Dimensions: 270x160x105 mm
- Weight: 900gr
- IP Rating: IP65

> **FDSGVA100** Wireless voice annunciator **on request*



- The FDSGVA100 wireless voice annunciator is an output devices which reproduces voice messages and can be activated, in the event of alarms, faults or emergency condition, by the control panel. You can record 3 messages lasting 32 seconds.
- Operating frequency range: 868.15 MHz - 869.85 MHz
- Radio signal's modulation type: FSK
- Communication range with VW2W100 orSGWE100: 200 m (in open space)
- Temperature range: from -10°C to +55°C
- Tolerated humidity range (no condensing): from 5% RH to 90% RH
- Operating frequency channels: 7
- Main battery type: CR123A (3.0V & 1.2 Ah)
- Secondary battery type: CR123A (3.0V & 1.2 Ah)
- Secondary battery lifespan: 2 months typical
- Main battery lifespan: 5 years typical
- Nominal output power: not less than 0.75 Watts
- Voice's output at 1m distance from 70 to 110 dB
- Dimensions: 170 mm diameter; 70 mm height
- Weight: 410 g

> **FDWTESTER** Wireless survey kit **on request*



- The purpose of the Radio Survey Kit is to determine the quality of the radio signal coming directly form a FDW2W wire to wireless translator or relayed through a FDWE100 wireless expander in a specific spot in the installation site where a wireless device is going to be installed.

The SGSK100 is composed of the following elements:

- A carrying case
- A pair of carrying case's keys
- A test device
- A test device's adaptor base
- A battery for the test device: CR123A (3 V & 1.2 Ah)
- A radio interface module
- A power supply transformer unit for the radio interface
- A wireless keypad
- An ER9V battery for the wireless keypad (9 V & 1.2 Ah)
- A programming lead for wireless keypad and radio interface connection
- A compact disk containing the wireless system configuration program (Wirelex) for the PC



Multi-function monitoring software

- Integrated monitoring system to control devices:
 - Fire Detection
 - CCTV
 - Burglar alarm
 - Access control
 - BAS Building automation system
- LAN and WAN line management
- Telephone lines: PSTN GSM ISDN
- Dedicated line: RS 232 RS 485 point to point
- Multiprotocol management
- Multimonitor management on each work station with graphic maps and user friendly interface
- Client server system architecture
- Complete control of every single device including remote programming and remote firmware updating
- Hierarchical system scalable by user category
- Advanced event storage and search functions
- Customizable to suit all customer requirements
- Operating environment: Windows

Winwatch versions available

- > **Win Terminal** max 2 devices
- > **Win Super** max 6 devices
- > **Win Max** max 12 devices
- > **Winwach Enterprise** Management of an unlimited number of peripherals

Optional modules for integration

- > **Win client** Management module for 1 additional client work station
- > **Win Mappe** Interactive image-maps management module
- > **Win back up** Module for back up management of the devices
connected to GSM data lines



> **C32/85** RS232 - RS 485 serial converter

- The converter is to be connected to the PC on which the WINWATCH environment monitoring software is installed
- Converts the RS 232 serial output to RS 485 or RS 422
- Provides for the connection of several multidrop units with galvanic isolation
- Power supply: 12Vdc



- Conventional fire alarm control panel 4 fixed fully monitored fire zones with up to 32 automatic detectors.
- Unlimited number of call point
- 2 monitored siren outputs
- Resettable fuses
- 1 "fire" and 1 "fault" relay output
- One man test
- Class change input
- EN54-2/4 Certification
- Manual trigger of the fire alarm
- Abundant LED indications
- Security key for switching over between access levels 1 and 2
- Independent Enable/Disable of each zone and sounders
- ABS plastic box
- Consumption - 50 mA 230Vac
- Operating temperature -5C° +40C°
- 1 battery 12 V / 7 Ah (not included) for stand-by supply

> **MICRA8PLUS** Conventional fire alarm control panels 8 loop expandable up to 16



- Conventional fire alarm control panel, 8 fully monitored fire zones, expandable up to 16 zones with up to 32 automatic detectors each
- Unlimited number of call point
- 4 monitored siren outputs (possible expanding up to 12 siren outputs)
- 1 "fire" and 1 "fault" relay output
- Resettable fuses
- One man test
- Repeater interface
- Certificated by EN54-2/4
- Power main - 230V AC 310% 2 fuses, Type T
- Operating temperature -5C° +40C°
- 1 battery 12 V/18 Ah (not included) for stand-by supply
- Size 167x181x76

> **FDEXP** 4 zones expander module for MICRA8PLUS fire alarm panel

> **FDW2WC** Conventional system expander module **on request*

The conventional system expander module permits to add a wireless sub-system to a conventional fire security installation.



- Power supply voltage range: 9-30V
- Current consumption: 50 mA NORMAL condition at 12 V
- Current consumption: 40 mA FAULT condition at 12 V
- Current consumption: 60 mA ALARM condition at 12 V
- Current consumption: 26 mA NORMAL condition at 24 V
- Current consumption: 21 mA FAULT condition at 24 V
- Current consumption: 31 mA ALARM condition at 24 V
- Communication range between SGCWE100 and wireless devices: 200 mt. open space
- Operating frequency range: 868 - 870 MHz
- Radiated power range: 5 dBm equals to 3 mW
- Radio signal's modulation type: FSK
- Dimensions: 190 mm x 230 mm x 50 mm With antennas
- Dimensions: 120 mm x 160 mm x 50 mm Without antennas
- Weight: 330 grams



- > **SF100** Optical smoke conventional detector
- > **SF200** Optical + thermal smoke conventional detector
- > **SF400** Thermal smoke conventional detector

- Low profile for installation on the standard analog base BSE100
- It is made from plastic material and has a modern design
- Diameter 100 mm
- Height 42 mm
- Weight (without) the base 99.4 g
- Operating temperature (-30 ÷ + 70)°C
- Relative operating humidity (95%) non condensing
- Remote control LED 6mA
- ABS + PC (UL94-V0) plastic materials
- Parts 5 and 7 certified to EN54 Standard
- Consumption in stand-by mode 75 QA
- Maximum power consumption 50mA
(in the case of an alarm it is limited by the resistor in the base or the unit)
- Diameter: 110mm
- Height: 54mm
- Weight: 130g



> **BSE100** Standard base

- It is made from plastic material and has a modern design
- Fitted with resistor for FD 102 /FD 108 panels
- Version with relay base onboard BSE 100 R model also available
- Diameter: 110 mm
- Height: 42 mm
- Weight: (without) the base 99.4 g
- Operating temperature: (-10 ÷ + 60)°C
- Relative operating humidity: (10 ÷ 93)% non condensing
- Local warning indicator (stand by and alarm) - Red LED
- ABS + PC (UL94-V0) plastic materials



> **BRL100** Relay base for conventional detectors: SF100 - SF200 - SF400



> **FD4930** Resettable and glass break emergency call point

- Protection Rating Ip 54 & Ip67
- Testing function with included resetting key
- Certified EN54 Standard
- EN54-11:2001+A1:2005



> **FD 5053** Optical acoustic display in thermoplastic material not self-powered

- Flashtube xeno lamp 0,5 Q
- Adjustable blinking frequency 60-90/min.
- Protection rating IP 40
- 3 phrases
- Power supply 24Vdc 64mA (also 12V in CC and AC current)



> **FD5055** Optical acoustic display

- Optical acoustic display in methacrylate polystyrene not self-powered
- High brightness LED 5
- Protection rating IP44
- Absorption in alarm condition 35 mA - 12V / 45 mA - 24V
- 2 phrases
- Power supply 12 or 24Vdc



> **FD 5551** Optical acoustic display ip 65 self powered

- Fluorescent lamp - 8W
- Blinking frequency 60min.
- Protection rating: IP 65
- 3 phrases
- Power supply: 24 Vdc Recharge current 100mA

> **FD 5553** Optical acoustic display ip 65

- Flashtube xeno lamp 0,5 Q
- Adjustable blinking frequency 60-90 /min.
- Protection rating: IP 65
- 3 phrases
- Power supply: 24Vdc 65mA (also 12V in CC and AC current)



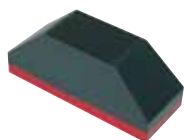
> **FD 1553** Aluminium optical acoustic display

- Flashtube xeno lamp 0,5 Q
- Adjustable blinking frequency 60-90 /min.
- Protection rating: IP 40
- 5 phrases
- Power supply: 24Vdc 60mA (also 12V in CC and AC current)



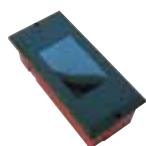
> **FD FI100** Optical led repeater for individual or group detector alarms

- The repeater connects directly to the detector repeater connector LED
- Wall or ceiling installation, Made from thermoplastic material
- Current consumption: 4.5 mA
- Operating temperature: - 30C° to + 70C°
- Protection rating: IP 40
- Dimensions: 80x80x27



> **FD RK70R** Linear optical detector with range of 40 X 15 meters reflecting light

- Small sized and stylish design
- Alarm and pre-alarm level indicator
- Power supply: 12Vdc 24Vac
- Current consumption: 10 mA
- 0-10V output analog signal for level signal indication
- Intervention delay: 5 seconds
- Indicator LEDs: pre-alarm and alarm
- Pre-alarm output: Open Collector (transistor NPN) 50 mA max
- Alarm relay output: 1A/24Vcc
- Output terminal with the possibility to place the signals at various distances
- Polycarbonate plastic case (red or white case at choice - black cover)
- Protection rating: IP 50 (IEC 529-144)
- Dimensions: 162x62x63 mm
- Weight: 250 gr
- To combine with: FDFX01, FDFX02



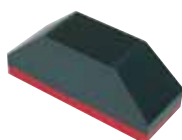
> **FD RK75R** Linear optical detector with range of 40 X 15 meters reflecting light, tmounting fixture **on request*

- Be matched to FDFX0X



> **FD RK80R** Light reflecting linear optical beam detectors

- Power supply: from 11 to 30 Vcc.
- Consumption: 14mA (receiver) - 4 mA (transmitter)
- Alarm, fault and pre-alarm indicator LED
- Alarm relay output: 1A/24 Vcc
- Pre-alarm output
- Open Collector (transistor NPN): 50 mA max
- Fault output
- Open Collector (transistor NPN): 50 mA max
- Protection rating: IP 65 (IEC 529-144)
- Max operating range: 2,550 m2
- Dimensions: 247x146x114 mm
- Container: polycarbonate plastic material
- Weight: 900 gr
- To combine with: FDFX01, FDFX02, FDFX03



> **FD RK90R** Linear optical detector with range of 50 x 15 meters reflecting light **on request*

- Small size and stylish design
- Digitally codified infrared beam
- Power supply: 12Vdc 24Vac
- Consumption: 16 mA stand-by mode
- Max covered area x: 750 m²
- 0-5V analog output for signal level measuring/visualization
- Alarm relay activation delay: 10 seconds
- Fault relay activation delay: 5 seconds
- Selection of the obscuration alarm threshold level with a 4 position switch
- Red led indication for alarm status
- Protection against the inversion of polarity
- Alarm relay: 1A/24Vcc
- Turbulence relay: 1A/24vcc
- Fault/maintenance relay: 1A/24Vcc
- Operating temperature: -10+55C°
- polycarbonate box
- Protection rating: IP 50 (IEC 529-144)
- Dimensions: 162x62x62 mm
- Weight : 200 gr.
- Relevant standard: EN54-12
- Certifications: VDS G209131 CPD 0786-CPD-20803
- To combine with: FDFX01, FDFX02, FDFX03

> **FD FX0X** Reflectors for optical detectors in the FD RK family

> **FX01**

- Dimensions: D=85mm
- Range 30 m with FDRK70R 70m with FDRK80R with FDRK90R 25m

> **FX02**

- Dimensions: 180x90mm
- Range 45m with FDRK70R 90m with FDRK80R with FDRK90R 40m

> **FX03**

- Dimensions: 205x185mm
- Range 60m with FDRK70R 110m with FDRK80R with FDRK90R 50m



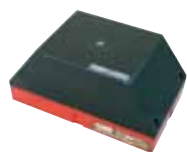
> **FDBF100A** Active infrared barrier - With range of 100 meters



- comprising a transmitter unit and receiver unit
- The FDBR100 model is available which allows the connection of 4 FDBF100a barriers and remote signal control
- Capacity: from 5 to 100 m.
- Operating range: 1,500m²
- Alarm output triggered at 4 different levels
- Fault output
- Power supply: 12/24Vdc
- Operating temperature: 5C°- 40C°
- Dimensions: 96x159x211
- Weight: 1,500 gr

> **FDBFTEST** Testing instrument for FDFB100 linear smoke detector

> **FD RK80B** Linear smoke detector barriers - With range of 100 meters **on request*



- Comprising a transmitter unit and an optoelectronic receiver.
- Power supply: from 11 to 30 Vcc.
- Protection against inversion of poles
- Consumption: 14mA (receiver) - 4 mA (transmitter)
- Sensitivity regulation: with internal trimmer or remote alarm
- Fault and pre-alarm indicator LED
- Alarm relay output: 1A/24 Vcc
- Pre-alarm output Open Collector (transistor NPN): 50 mA max
- Fault output Open Collector (transistor NPN): 50 mA max
- Trimmer to regulate the pre-alarm intervention point
- 0-10V output analog to measure the signal level
- Optical capacity: 0-100m
- Max operating range: 1600 mq
- Dimensions: 247x146x114 mm.
- Container: polycarbonate plastic material
- Protection rating: IP 65
- Power supply 12/24 Vdc
- Weight: 900 gr.

> **FD RK80SB** Linear smoke detector barriers - With range of 170 meters **on request*

Same features of FDRK80B but with:

- Optical capacity: 0-170m

> **FD 1450** Flood and humidity protection detector in thermoplastic material



- The presence of water is detected by 4 gold coloured support feet. The alarm is triggered by a relay. Article FD1450S is available and connects to FD 1450 that acts as the sensor.
- It is possible to connect up to 10 FD 1450S in parallel
- Protection rating: IP 40
- Operating temperature: 5C°- 40C°
- Operating voltage: 12/24Vdc Max
- Consumption: 30mA 24Vdc

**on request*

> **FD 2450** Flood protection detector ip 67 **on request*



- Sensor that detects the presence of water using 2 golden coloured feet.
- The alarm is triggered by a relay
- It is able to detect the presence of liquid at a height of from 0 to 11 mm
- Supplied with a 4m cable
- Protection rating IP 67
- 7 connection wires with 4m cable
- Operating temperature: - 15C° + 70C°
- Operating voltage: 12/24Vdc
- Max consumption: 49 mA 24Vdc consumption when idle 21 mA 24Vdc
- Weight: 0.89 Kg



> G55 500 Gas detector

- The reading, expressed in L.E.L., is set by default as follows:
 - Standard setting for L.E.L.: 15% pre-alarm and 30% alarm
 - Standard setting for P.P.M: 100 pre-alarm and 200 alarm
 - Standard setting for oxygen: 18% pre-alarm and 15% alarm (insufficient)
 - Standard setting for oxygen: 24% pre-alarm and 27% alarm (excessive)
- Case: IP 55;
- Type of Gas detected
- Power supply 12/24 Vdc
- Current consumption when idle 55 mA at 12Vdc and 28 mA at 24 Vdc
- Current consumption in pre-alarm 68 mA at 12Vdc and 35 mA at 24 Vdc
- Current consumption in alarm 80 mA at 12Vdc and 45 mA at 24 Vdc
- Sensitive element: Semi-conductor
- Operating temperature from 0C° to + 40C°
- Relative humidity 90%
- Max air speed 10 m/sec
- Container: dust-proof metal ADFT
- Weight: 370 g
- Dimensions: 141x100x6 mm HxLxP

Available in the following versions:

- Methane
- Special gases
- Petrol fumes
- Carbon monoxide
- Hydrogen gases
- GPL
- Propane
- Ammonia 100/200 ppm in container
- Ammonia 1000/2000 ppm in container
- Acetylene gas
- Oxygen - excessive
- Oxygen - insufficient

G55 line IP 55

- Mod. G55 500
- Mod. G55 501
- Mod. G55 502
- Mod. G55 503
- Mod. G55 504
- Mod. G55 505
- Mod. G55 506
- Mod. G55 507
- Mod. G55 508
- Mod. G55 509
- Mod. G55 510
- Mod. G55 511

ADPE and ATEX line

- Mod. E55 500
- Mod. E55 501
- Mod. E55 502
- Mod. E55 503
- Mod. E55 504
- Mod. E55 505
- Mod. E55 506
- Mod. E55 507
- Mod. E55 508
- Mod. E55 509
- Mod. E55 510
- Mod. E55 511

Accessories for gas detectors

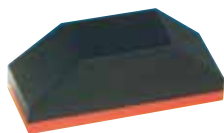
- > **FD55501** Portable console for setting gas detector 500 series
- > **FD55503** 3 relays output module for gas detector 500 series
- > **FD55105** Beaker for G series gas detectors
- > **FD55106** Beaker for E series gas detectors
- > **FDB550XX** Test cylinder for GAS detectors

> **FD 55505AD** Adaptor for gas detectors

Allows feedback of alarm, pre-alarm and fault events to be sent to the input module on the addressed fire detection unit. Adaptor to be fitted inside the gas detector and connected to the single input module so fault, alarm and pre-alarm feedback can be sent. Powered by the gas detector.

> **FD55505ID** Analog interface with Teledata digital communication protocol

To be connected to the digital alarm loop to manage alarm, pre-alarm and fault event feedback. It is possible to identify the address from the unit via the simple automatic loop device discovery. Powered by the gas detector.

> FD FL10 Infrared radiation flame detectors **on request*

- Small sized, ideal for installation on walls and ceilings
- Power supply: 12 Vcc (FL10/12) or 24 Vcc (FL10/24)
- Current consumption: 15 mA
- Maximum distance of flame detection: 20 m (flame target 20x20 cm - height 20 cm)
- Optical viewing angle: 120 degrees
- Sensitivity regulation
- Intervention delay regulation
- Terminals for remote operating tests
- Relay output: 1A/24 Vcc
- Casing in self-extinguishing polycarbonate - Class V0
- Protection rating: IP 34
- Dimensions: 162x62x63 mm
- Weight: 240 gr

> FD FL20 Infrared radiation flame detector with two sensors IP65 **on request*

- 2 sensors with different viewing spectrum ideal for industrial application
- For wall or ceiling installation, wide viewing angle
- Casing: self-extinguishing polycarbonate - IP65
- Power supply: 12/24 Vcc
- Consumption: 18 mA
- Maximum distance of flame detection: 20 m (flame target 20x20 cm - height 20 cm)
- Optical viewing angle: 120 degrees
- Sensitivity regulation:
- Intervention delay regulation:
- Terminals for remote operating tests
- Relay output: 1A/24 Vcc
- Casing in self-extinguishing polycarbonate material - Class V0
- Protection rating: IP 65
- Dimensions: 247x146x114 mm
- Weight: 900 gr.



> **FD EV 395** Spark detector IP 65 **on request*

The FD EV395 spark detector is an electronic device used to detect sparks in tubes or pipes conveying various types of combustible materials towards a storage silos.

- Power supply: 24 Vcc and ca
- Solid optical viewing angle: 90 degrees
- Regulating sensitivity
- Remote operating tests
- Protection rating: IP67
- Dimensions: 140x135x85



> **FD SCL 01** Spark detector IP 65 ATEX version **on request*

The FD SCL-01 spark detector is an electronic device used to detect sparks in tubes or pipes conveying various types of combustible materials towards a storage silos.

- The device is explosion proof EX-d IIC-T6 - ATEX certified.
- Power supply: 12/24 Vcc and ca
- Electronic with microprocessor
- Solid optical viewing angle: 90 degrees
- Regulating sensitivity
- Protection rating: explosion proof EX-d IIC T6
- Certifications: CESI and ATEX
- Protection rating: IP66
- Dimensions: 200x130 mm



> **FD EV-521** Control unit for 2 spark detectors **on request*

The spark detector control unit is used with the relative detectors. It can control 1 or 2 nozzle solenoid valves to spray water to extinguish flames. It can control relative acoustic alarms. Automatic activation of shutters to block the flow. It checks the opening of the shutters using pressure switches on the hydraulic circuit.

- Timers: 2 adjustable
- Remote Test buttons for 2 spark detectors
- Relay output: 4
- Container: in shockproof plastic material with transparent flap
- Protection rating: IP 54
- Dimensions: 275x325x110 mm



> **FD5206** Fire alarm bell for indoor use

- Steel Cover
- Engines high performance
- Low consumption
- 4, 6 inch versions
- Power 24Vdc/12Vdc
- Protection rating IP42
- Operative temperature -10 +50 C°
- Acoustic pressure at 1mt 80db
- Current consumption 18mA 4"; 25mA 6"
- UNI EN54-3:2000+A1:2002



> **FD5060** Electronic fire alarm bell for outdoor use

- 6 inch steel cover
- Low consumption
- Protection rating IP 55
- Power supply 12/24Vdc
- Operative temperature -10 +50 C°
- Consumption 55mA at 12Vdc ; 25mA at 24Vdc
- UNI EN54-3:2000+A1:2002



> **SF105** Indoor fire siren with red flash

- Volume: 105 dB
- Speaker: piezo
- Base frequency: 2.9 – 4.0 kHz
- Modulating frequency: 3.2 Hz
- Box: plastic
- Consumption: 80 mA



> **FD5405** 32 tone selectable electronic sounder

- Volume control
- Available IP 54 & IP 65
- Allowable voltage 9 - 28 Vcc
- Acoustic pressure At 1 m 102db
- Consumption 32mA Max
- UNI EN54-3:2000+A1:2002



> **FDSF200** Outdoor siren, with orange flash light

- Volume: 96 dB
- Speaker: piezo
- Base frequency: 3.2 – 3.8 kHz
- Modulating frequency: 3 Hz
- Box: plastic
- Consumption: 80 mA



> **FDF24** Fire Siren outdoor powered **on request*

- Rated Power: 24 Vdc
- Backup battery: 12Vdc 2,1 Ah Pb
- Max. Charge: 0,5 A
- Sound power level max.: 102 db a 1mt
- Frequency: 1000Hz/ 1700Hz
- Fault: Red LED and "OUT test"
- Degree of Protection: IP33C
- Operating Temperature: -25 + 70C °
- Dimensions: 322x215x105 mm
- Weight: 2370 gr.
- Certificate of Conformity: 0051-CPD-0157
- Reference Standard: EN45-3 :2000+A1:2002
- Notified body: IMQ



> **FD M5411 D** Metal electromagnetic block

- Electromagnetic door block in steel housing
- Supplied with a counter plate and electrical connection
- Fitted with double cable sheath
- Retaining force: 40N
- Comes with release button and protection diode (Also available with no diode)
- Protection rating (IP) 42
- Power supply 12Vdc
- Consumption: 2W



> **FD M9412 D** Die-cast aluminium electromagnetic block

- Electromagnetic door block in reinforced vandal-proof aluminium housing
- Comes with release button and protection diode
- Retaining force: 40N
- Fitted with vandal-proof reel
- Protection rating (IP) 52
- Power supply: 24Vdc
- Consumption: 2W



> **TD2720** Power units certified to EN 54-4



- Battery type: 2 x 7,2Ah 12V
- Dimensions: 345x385x123mm
- Power supply: 230 Vac +10% -15% 50 Hz
- Maximum consumption: 0,4 A
- Exit nominal voltage at 20C°and maximum Ripple: 27,6 Vcc
- Minimal and Maximum voltage on charge : 20,2 Vcc - 31 Vcc
- Voltage of and discharge: 20,2 Vcc
- Maximum current provided: 1,9 A
- Operating temperature: -5 + 40C°
- Maximum charge battery current: 0,5 A
- Current on charge: I_{max} a 1,4 A
- Resistance addition battery maximum value = R_{imax}: 2,4 ohm
- Power supply: Fuse uscita A: F3,15A/250v
- Modules: B-C-D auto-resetting output Fuse 0,5 A for each output
- Power supply: 230 fuse Incorporate
- Power supply: inversion polarity of battery fuse F3,15A/250V
- Exit battery fuse: F3,6A/250V
- Exit 1 Voltage shortage: Free contact NC (open in alarm) 20mA/30V
- Exit 2 Out of order: Free contact (open in alarm) 20mA/30V
- Exit 3 Low battery: Free contact NC (open in alarm) 20mA/30V
- Exit 4 Out of order power supply: Free contact NC (open in alarm) 20mA/30V

> **TD2740** Power units certified to EN 54-4



- Battery type: 2 x 18Ah 12V
- Dimensions: 345x385x123mm
- Power supply: 230 Vac +10% -15% 50 Hz
- Maximum consumption: 0,9 A
- Exit nominal voltage 20C°and maximum Ripple: 27,6 Vcc
- Minimal and maximum voltage on charge : 20,2 Vcc - 31 Vcc
- Voltage of and discharge: 20,2 Vcc
- maximum current provided: 3,3 A
- Operating temperature: -5 + 40C°
- maximum charge battery current: 1 A
- Current on charge: I_{max} a 2,3 A
- Resistance addition battery maximum value = R_{imax}: 1,5 ohm
- Power supply: Fuse uscita A: F3,15A/250v
- Modules: B-C-D auto-resetting output Fuse 0,5 A for each output
- Power supply: 230 fuse Incorporate
- Power supply: inversion polarity of battery fuse F4A/250V
- Exit battery fuse: F6,3A/250V
- Exit 1 Voltage shortage: Free contact NC (open in alarm) 20mA/30V
- Exit 2 Out of order: Free contact (open in alarm) 20mA/30V
- Exit 3 Low battery: Free contact NC (open in alarm) 20mA/30V
- Exit 4 Out of order power supply: Free contact NC (open in alarm) 20mA/30V

> **TD2770** Power units certified to EN 54-4



- Battery type: 2 x 27Ah 12V
- Dimensions: 395x385x185mm
- Power supply: 230 Vac +10% -15% 50 Hz
- Maximum consumption: 1,6 A
- Exit nominal voltage 20C°and maximum Ripple: 27,6 Vcc
- Minimal and maximum voltage on charge : 20,2 Vcc - 31 Vcc
- Voltage of and discharge: 20,2 Vcc
- maximum current provided: 6,3A
- Operating temperature: -5 + 40C°
- Maximun charge battery current: 1,5 A
- Current on charge: I_{max} a 4,8 A
- Resistance addition battery maximum value = R_{imax}: 0,75 ohm
- Power supply: Fuse uscita A: F4A/250v
- Modules: B-C-D auto-resetting output Fuse 0,5 A for each output
- Power supply: 230 fuse T1,25A/250V
- Power supply: inversion polarity of battery fuse F6,3A/250V
- Exit battery fuse: F6,3A/250V
- Exit 1 Voltage shortage: Free contact NC (open in alarm) 20mA/30V
- Exit 2 Out of order: Free contact (open in alarm) 20mA/30V
- Exit 3 Low battery: Free contact NC (open in alarm) 20mA/30V
- Exit 4 Out of order power supply: Free contact NC (open in alarm) 20mA/30V



> **S-150-27**

- Switching type: 230V/27,6V-5.6A 50Hz
- DC Adjustment +-10%
- Protection against: short Circuit, overload, power surge
- Dimensions: 199x50x110
- Weight: Kg. 0.8
- Standard: CEI EN 60950- CEI 79/2

Open frame adaptors

> **Cavo 32101** Red twisted grade 4 shielded fire-proof cable diameter 2 x 1 mm

- 30 min fire resistant

Cables

> **Cavo 32151** Red twisted grade 4 shielded fire-proof cable diameter 2 x 1,50 mm

- 30 min fire resistant

> **Bat1201** Rechargeable lead batteries 12Vdc 1,22 Ah 97L x 43P x 51A mm

> **Bat1202** Rechargeable lead batteries 12Vdc 2 Ah 178L x 35P x 61A mm

> **Bat1207** Rechargeable lead batteries 12Vdc 7 Ah 151L x 65P x 94A mm

> **Bat1212** Rechargeable lead batteries 12Vdc 12 Ah 151L x 99P x 95A mm

> **Bat1217** Rechargeable lead batteries 12Vdc 17 Ah 181L x 76P x 167A mm

> **Bat1225** Rechargeable lead batteries 12Vdc 25 Ah 166L x 175P x 125A mm

> **Bat1240** Rechargeable lead batteries 12Vdc 40 Ah 197L x 165P x 170A mm

Batteries

NOTE



NOTE
